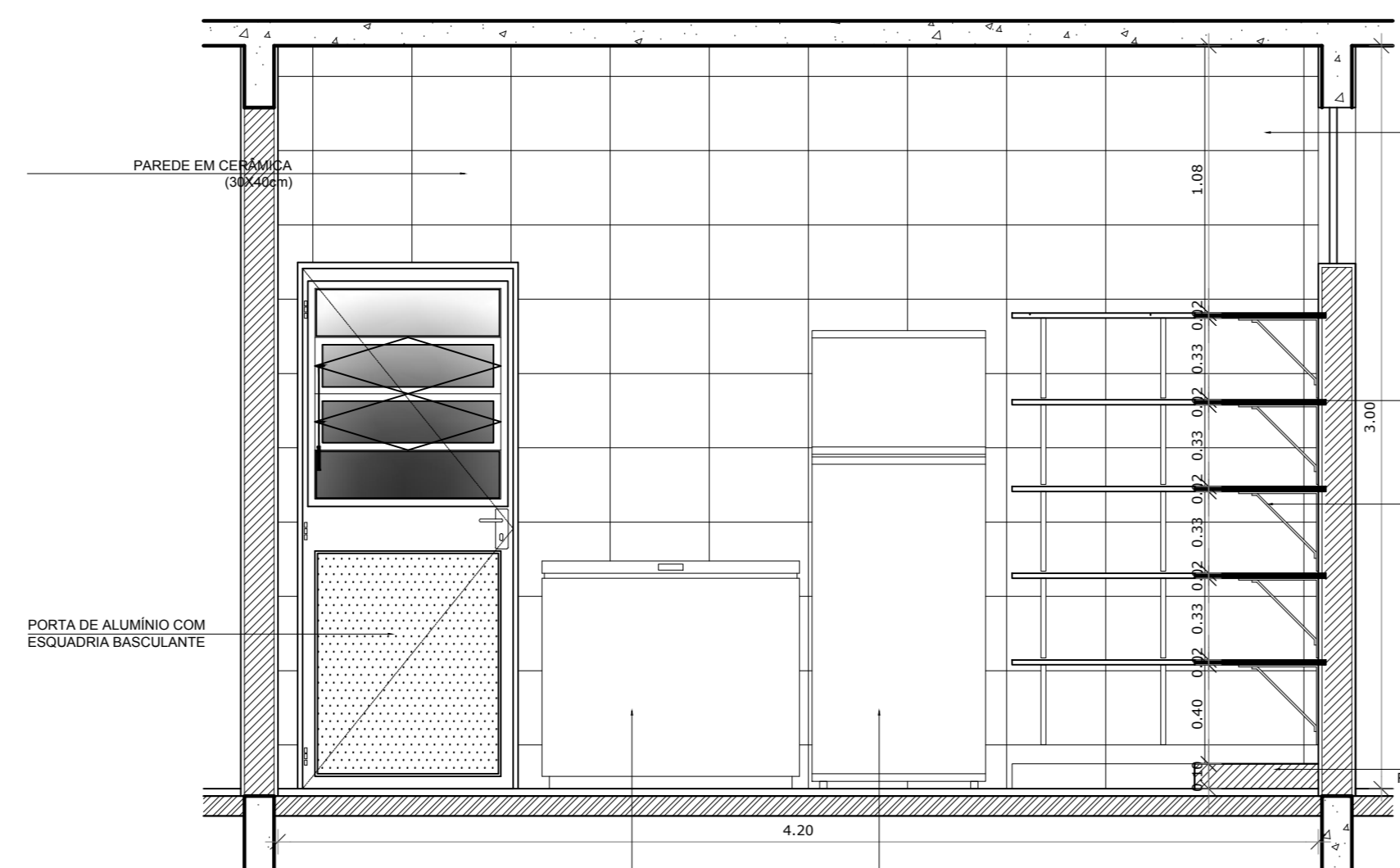
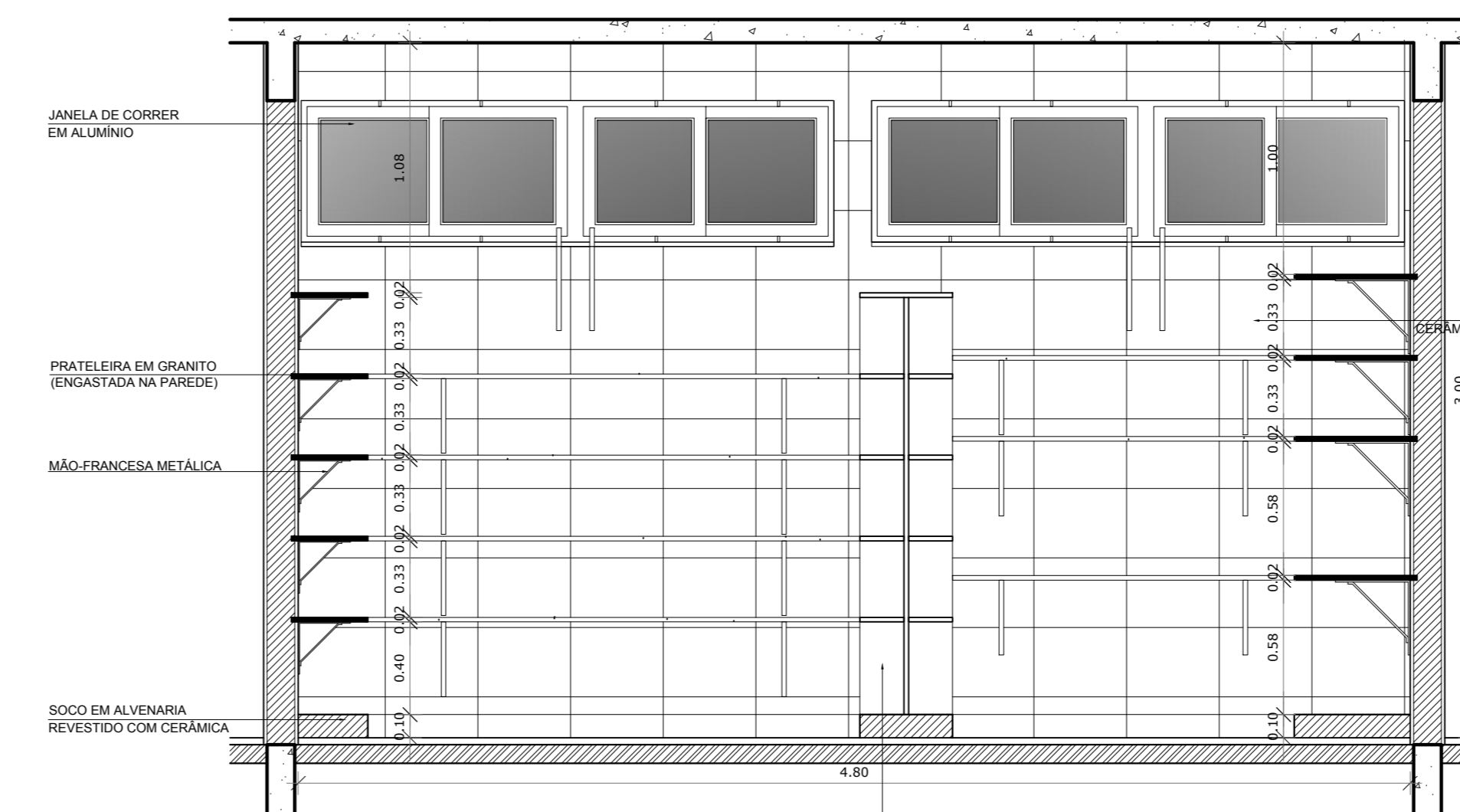


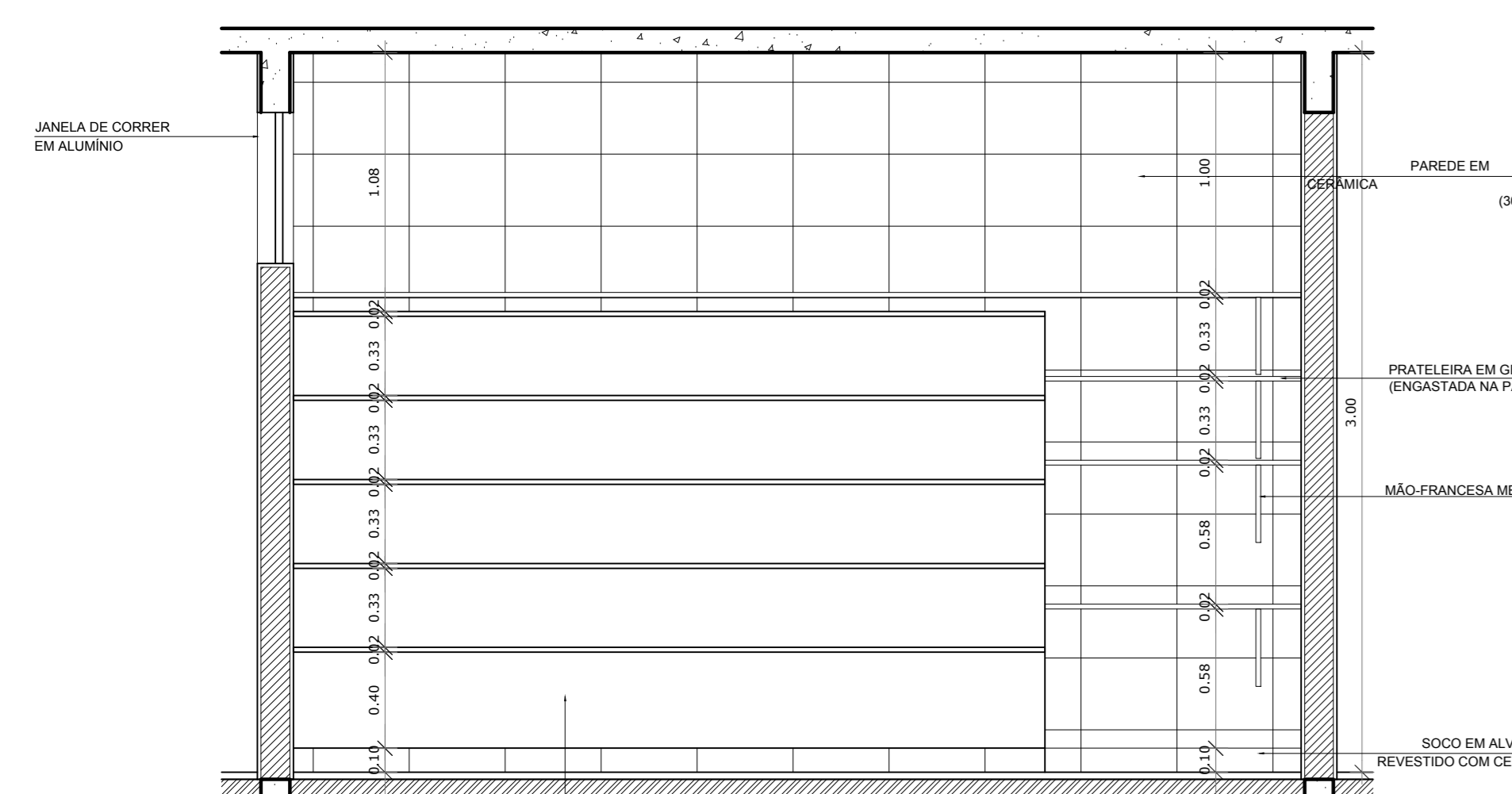
VISTA 1



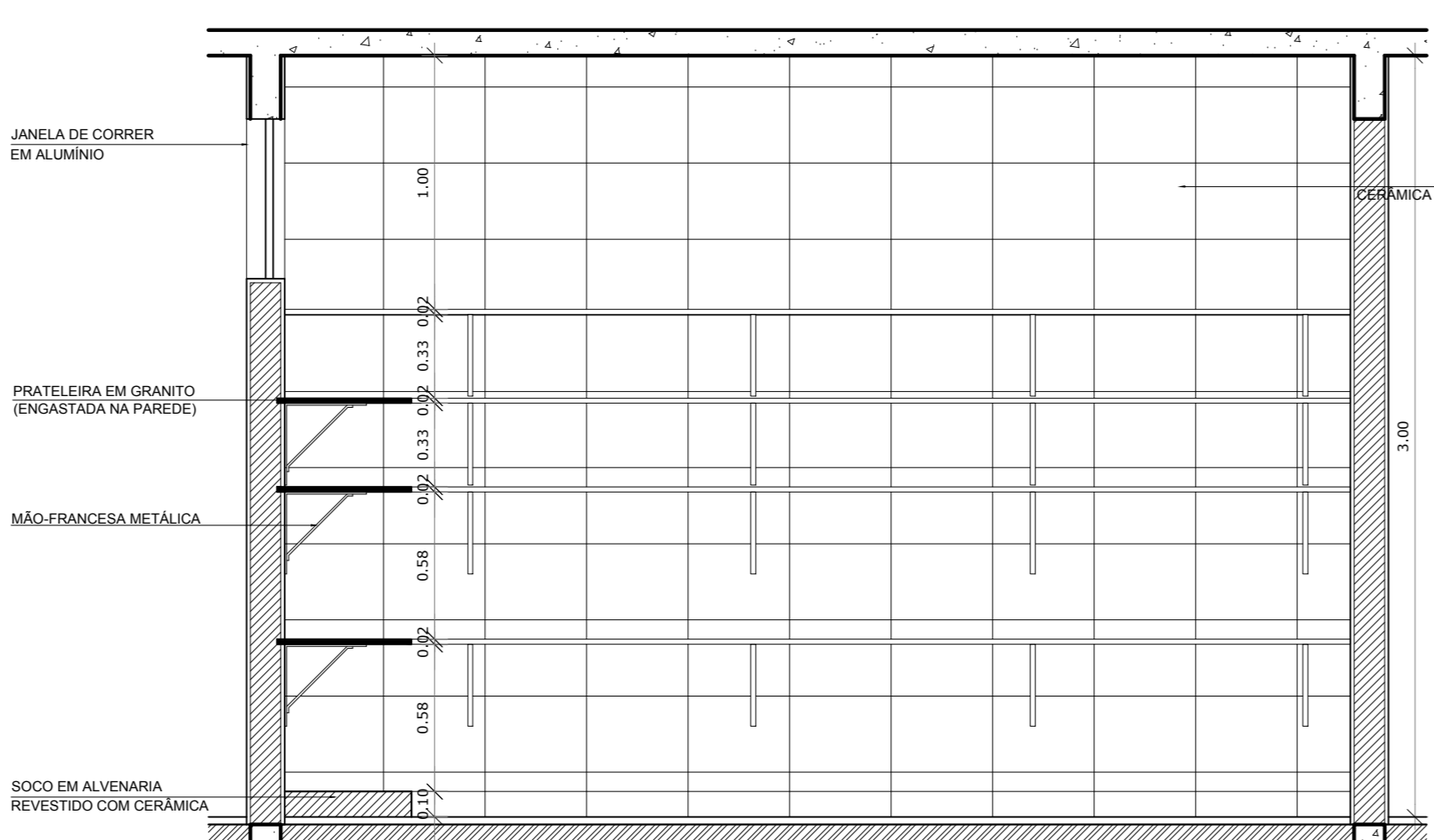
VISTA 2



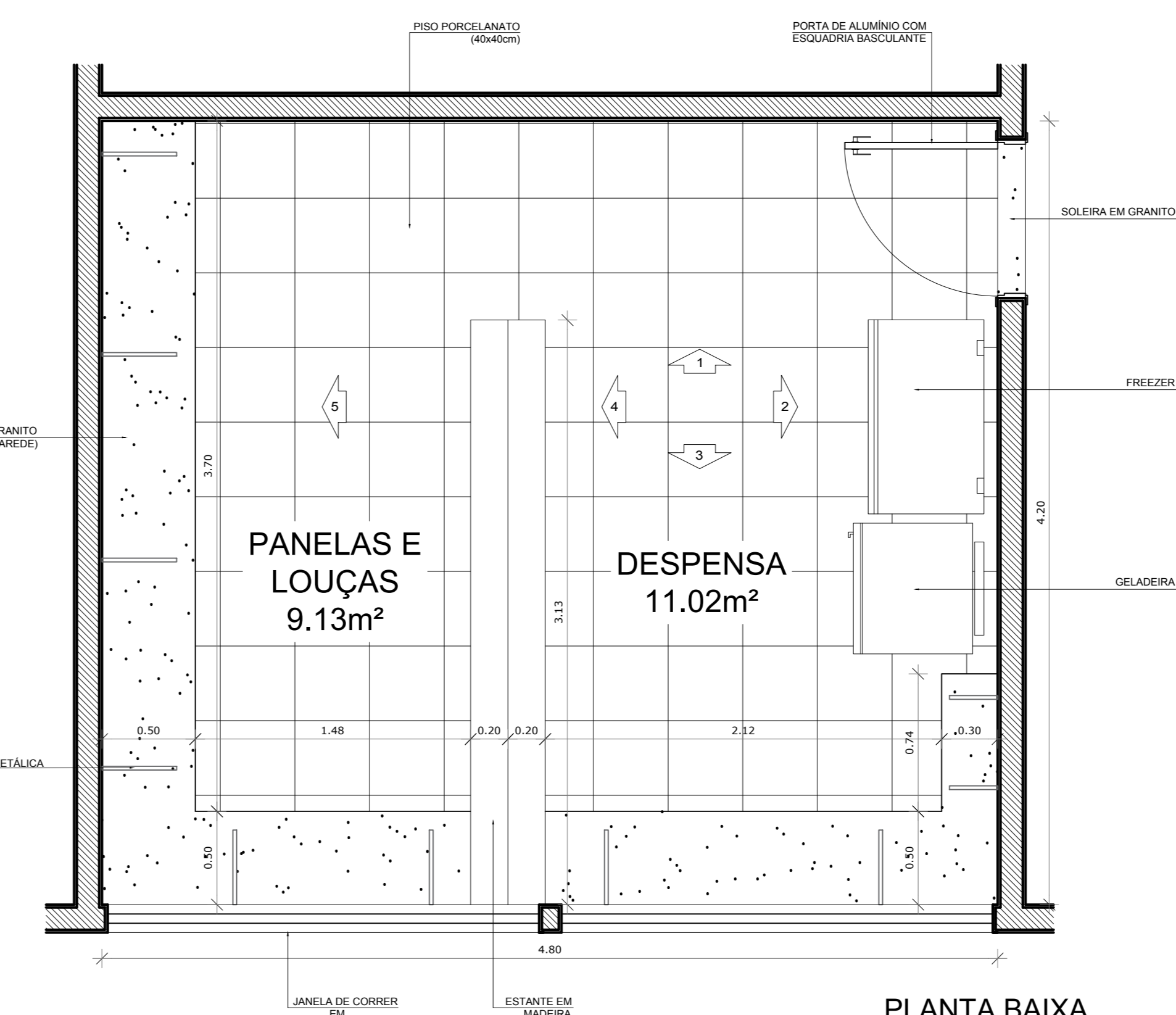
VISTA 3



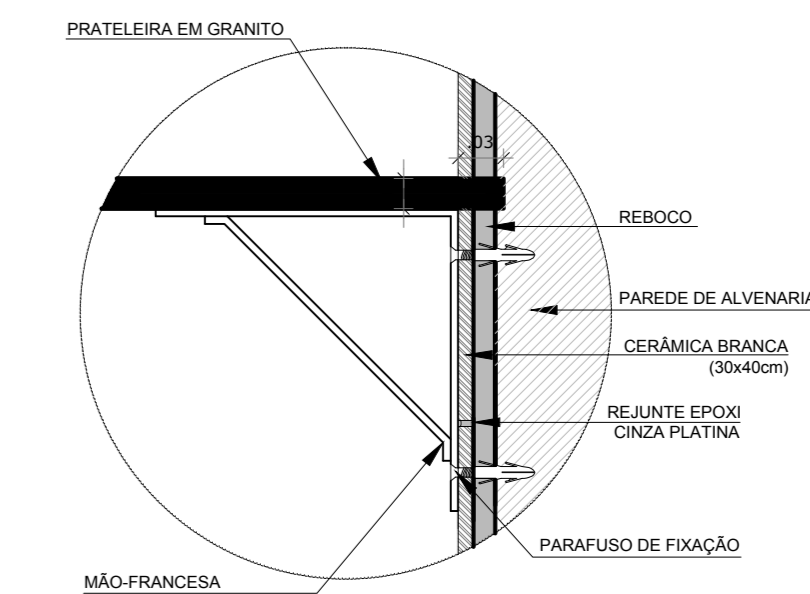
VISTA 4



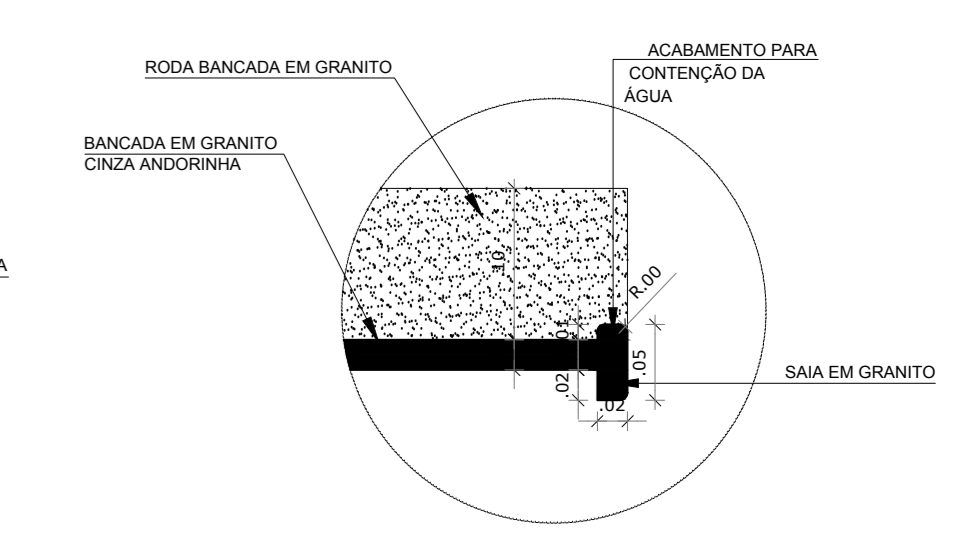
VISTA 5



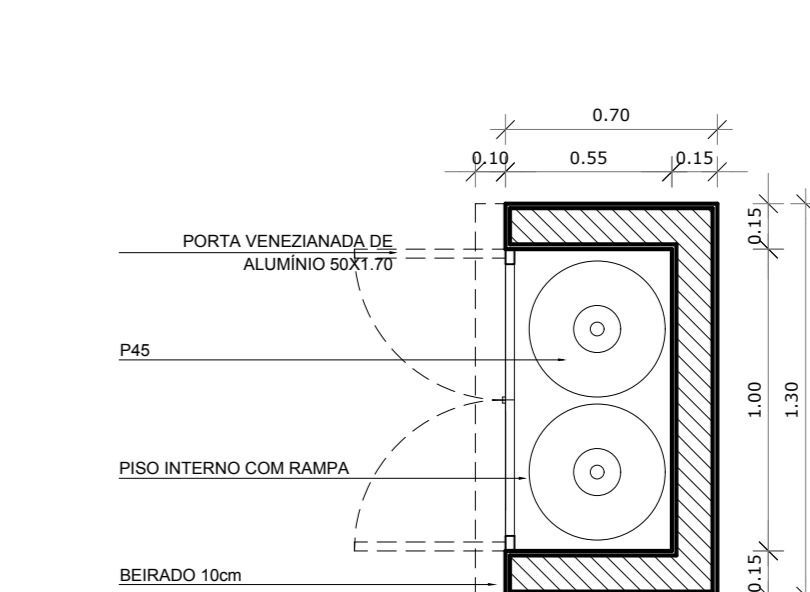
PLANTA BAIXA



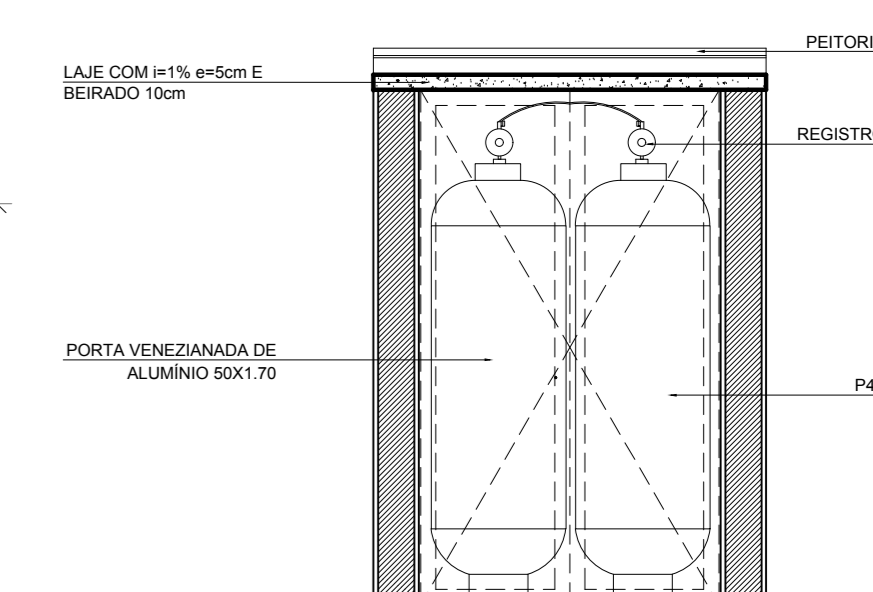
DETALHE PATELEIRA DE GRANITO ESC.: 1/5



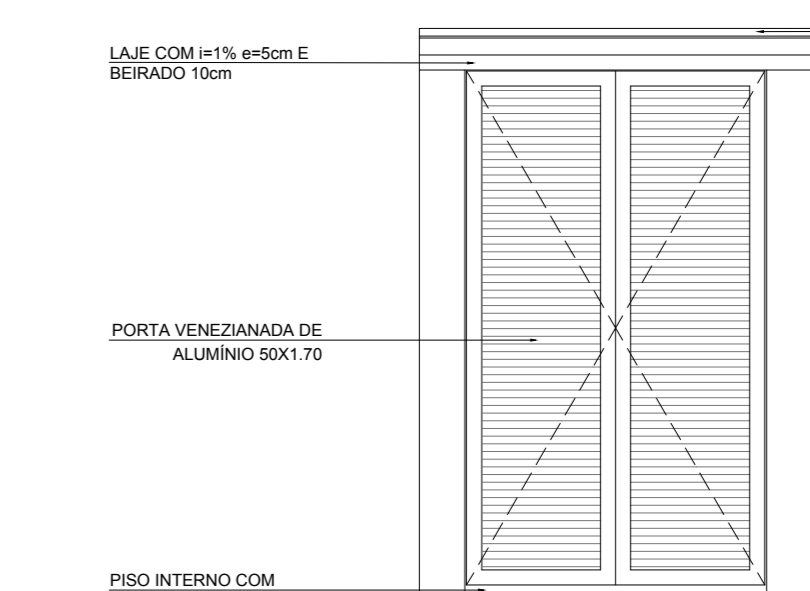
DETALHE BANCADA DE GRANITO - ÁREA MOLHADA ESC.: 1/5



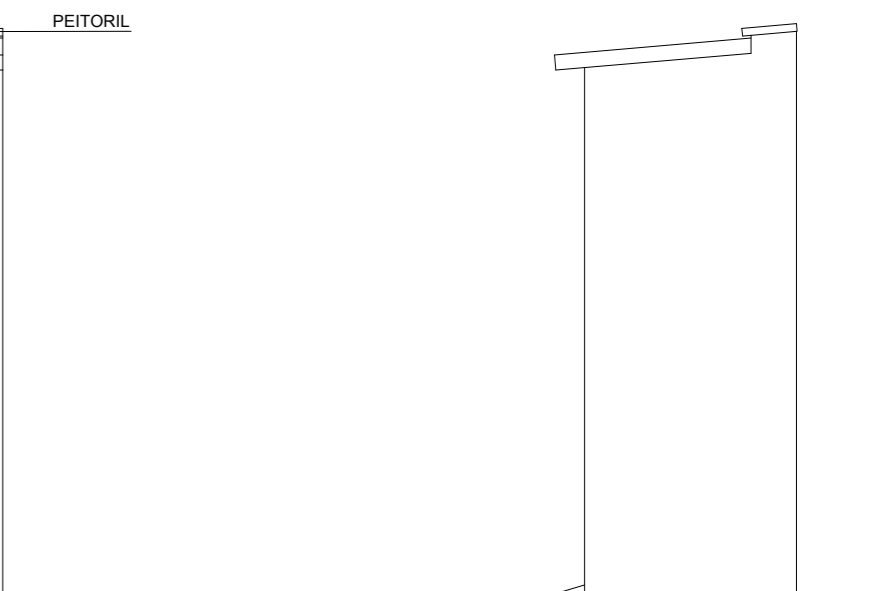
PLANTA BAIXA



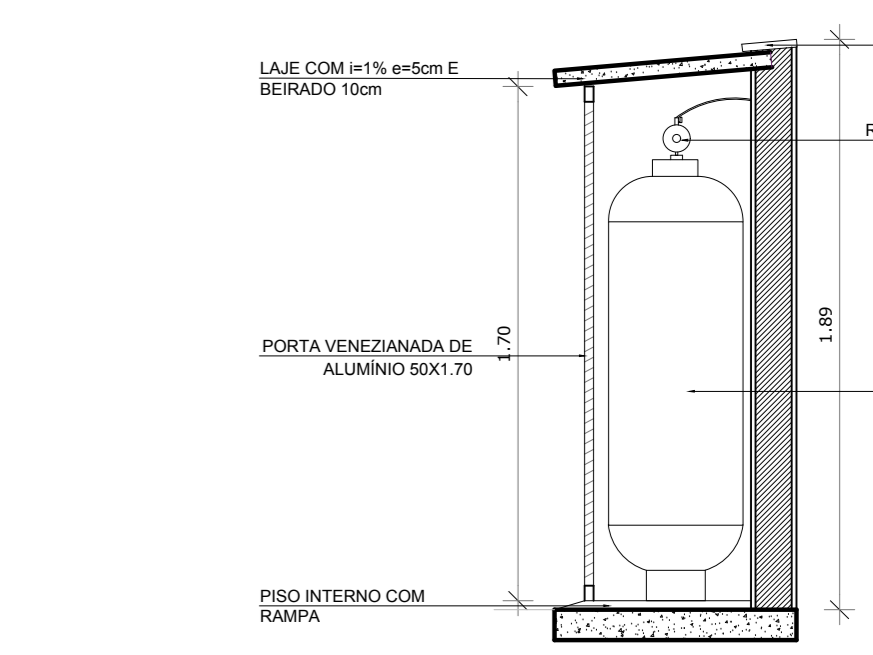
CORTE FRONTAL



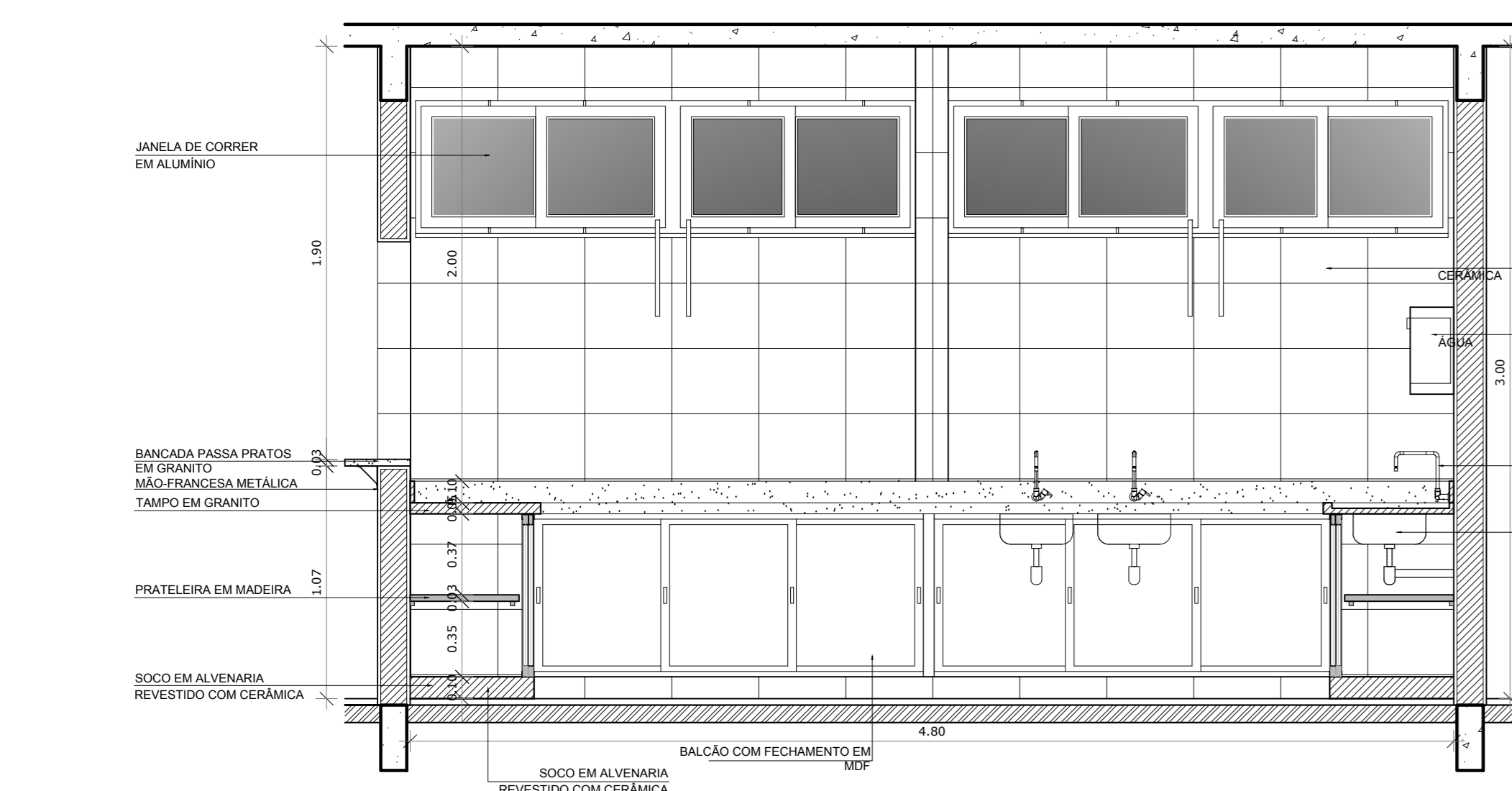
VISTA FRONTAL



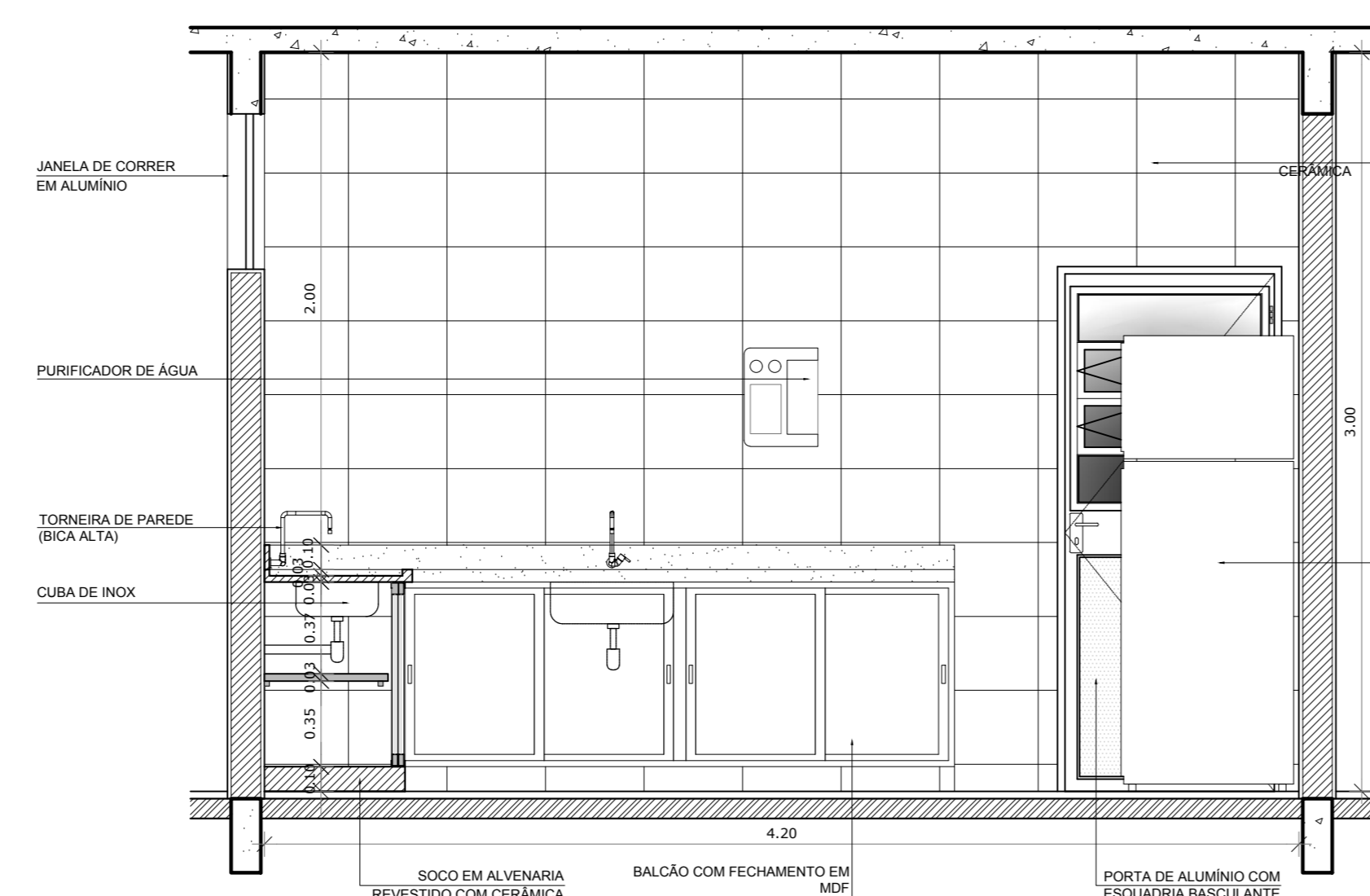
VISTA LATERAL



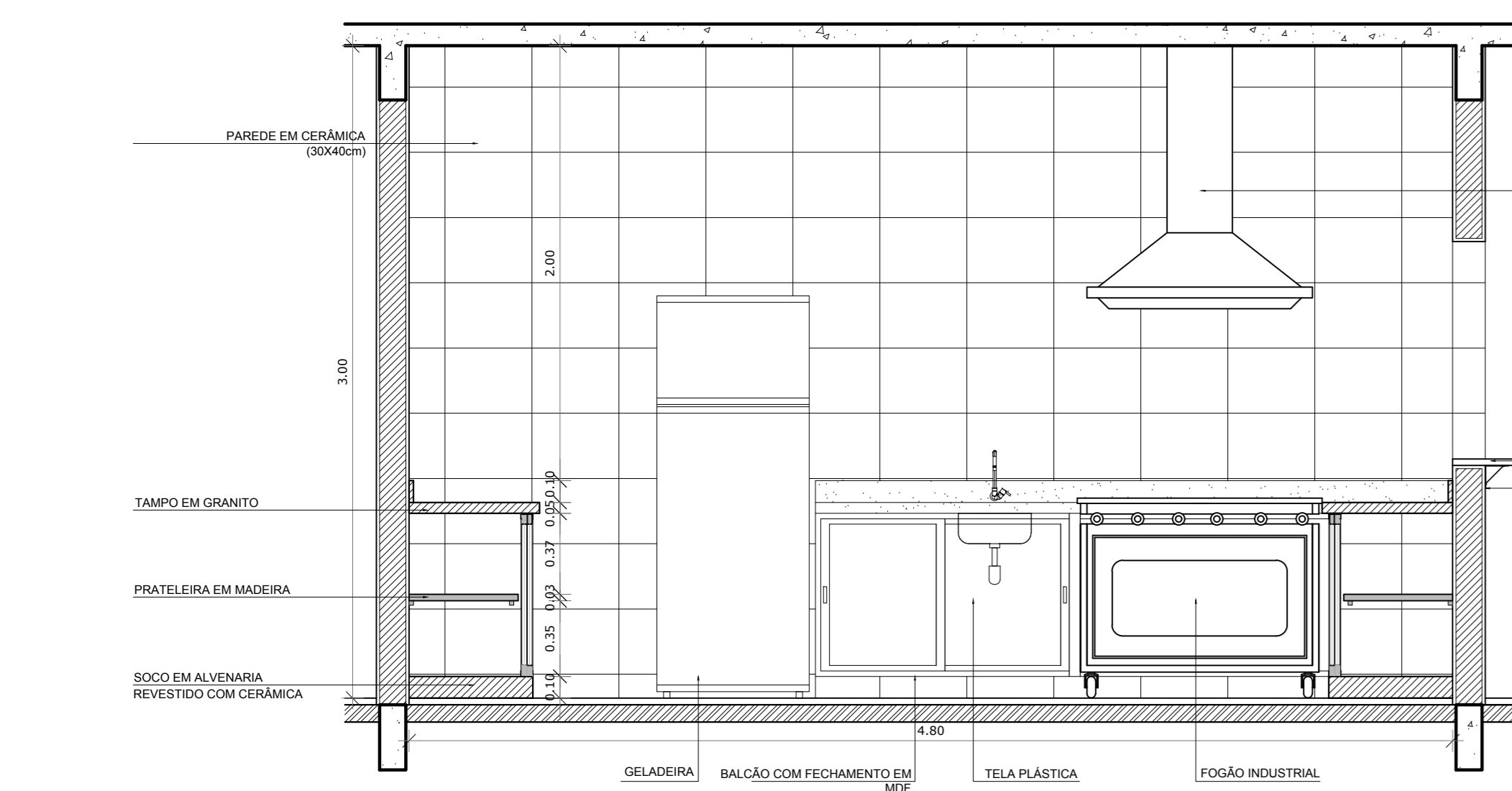
CORTE LATERAL



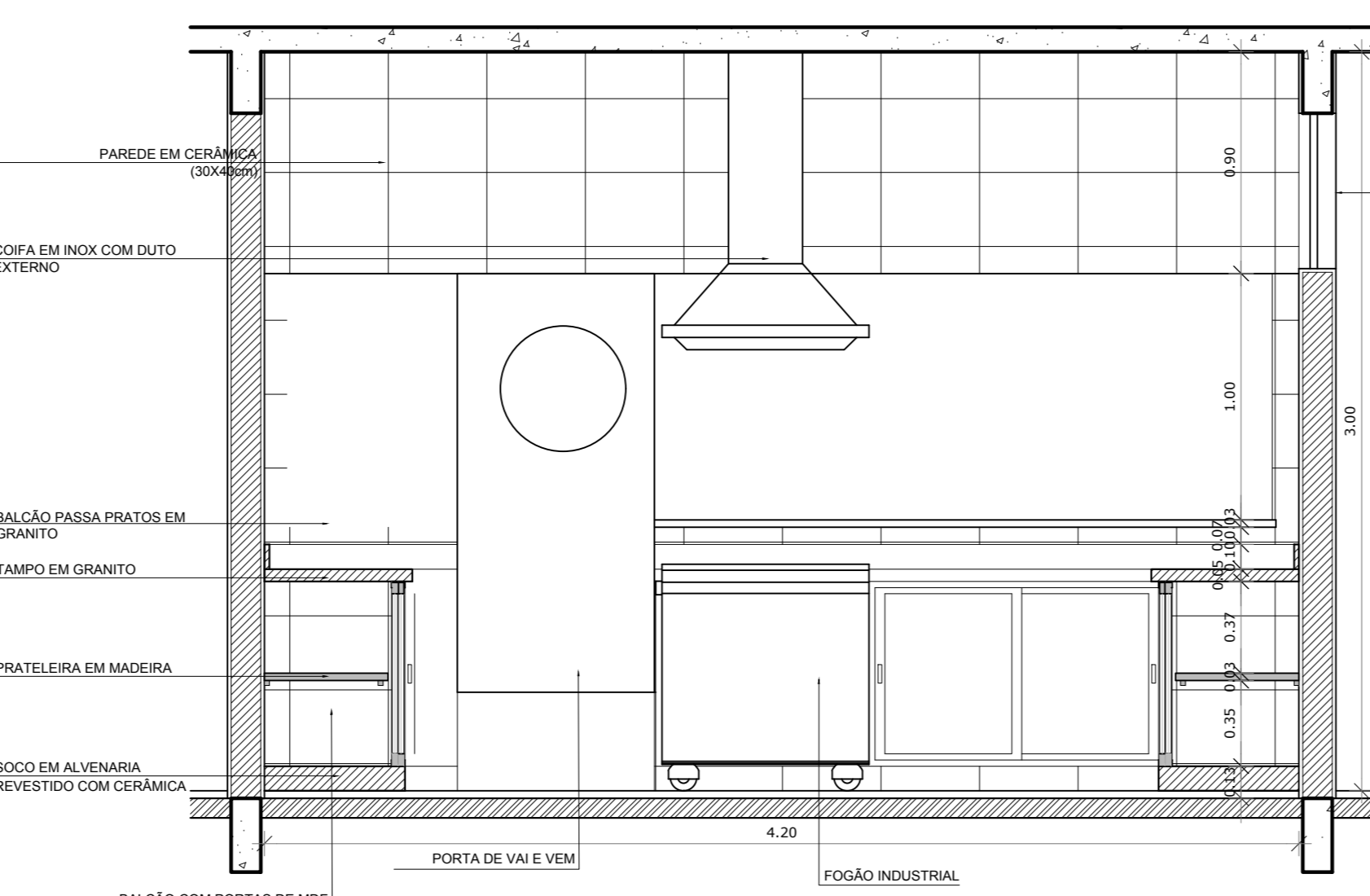
VISTA 1



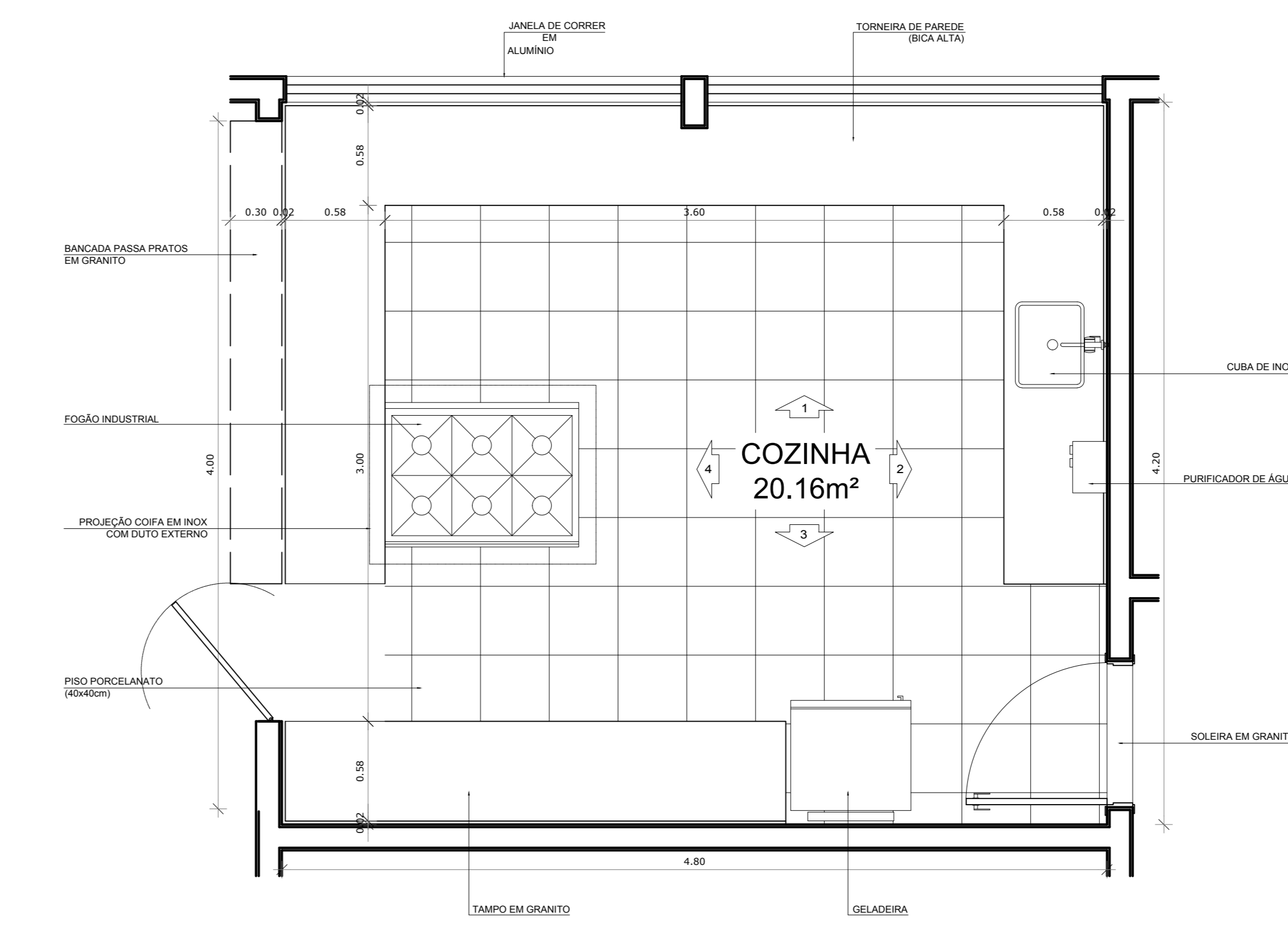
VISTA 2



VISTA 3



VISTA 4



PLANTA BAIXA

REVISÃO	DATA	RESPONSÁVEL	OBSERVAÇÃO
PREFEITURA MUNICIPAL DE PELOTAS SECRETARIA MUNICIPAL DA EDUCAÇÃO DEPARTAMENTO DE PLANEJAMENTO E ENGENHARIA EMEI IVANIR DIAS SECRETÁRIO MUNICIPAL DA EDUCAÇÃO			
PROJETO: Angela Bosenbecker (Projeto Arquitetônico: Angela C. Bosenbecker CAU - A31414-5)			
PROJETO: PROJETO ARQUITETÔNICO			
ENDEREÇO: R. Manoel Lucas de Lima, 215			
CONTEÚDO: Detalhe - Despensa, Cozinha, Casa de gás			
LOCAL E DATA: Pelotas, outubro de 2014.			
ESCALA: 1/25			PA-10